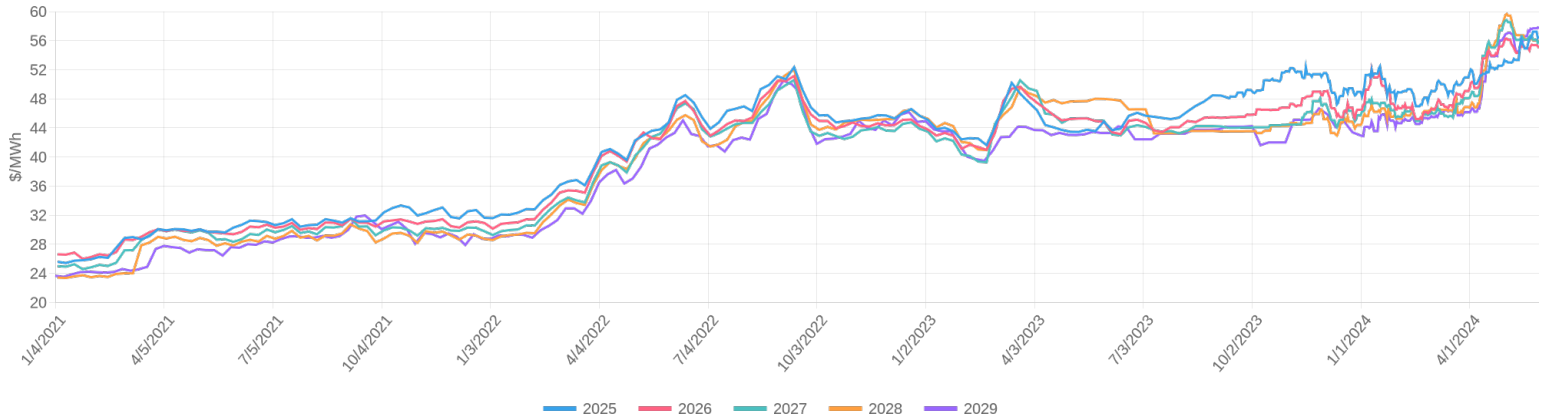


May 29, 2024

Historical Pricing Energy (RTC incl basis)



Start Mo	Term (months)	Price* (\$/MWh)	Daily Change	Weekly Change	Monthly Change
Jan 25	12 (Cal 2025)	\$56.57	\$0.20	\$0.22	\$3.86
Jan 26	12 (Cal 2026)	\$54.99	(\$0.26)	(\$0.26)	(\$0.45)
Jan 27	12 (Cal 2027)	\$56.01	\$0.31	(\$0.69)	(\$2.16)
Jan 28	12 (Cal 2028)	\$56.01	\$0.04	(\$0.33)	(\$2.48)
Jan 29	12 (Cal 2029)	\$57.68	(\$0.13)	\$0.03	\$1.39
Jun 24 (Prompt Mo)	7 (Bal of 2024)	\$67.96	(\$1.33)	(\$2.34)	\$7.50
	12	\$60.50	(\$0.72)	(\$1.26)	\$5.52
	24	\$58.88	(\$0.35)	(\$0.68)	\$4.39
	36	\$57.99	(\$0.25)	(\$0.55)	\$2.81
	48	\$57.48	(\$0.13)	(\$0.57)	\$1.76
	60	\$57.34	(\$0.10)	(\$0.52)	\$1.56
	49 (Jun 28)**	\$57.27	(\$0.13)	(\$0.86)	\$1.74

(*) = Energy price based on RTC block (**) = Sweet-Spot term (lowest price term > 12 mo); End-month shown

60 Forward Months

