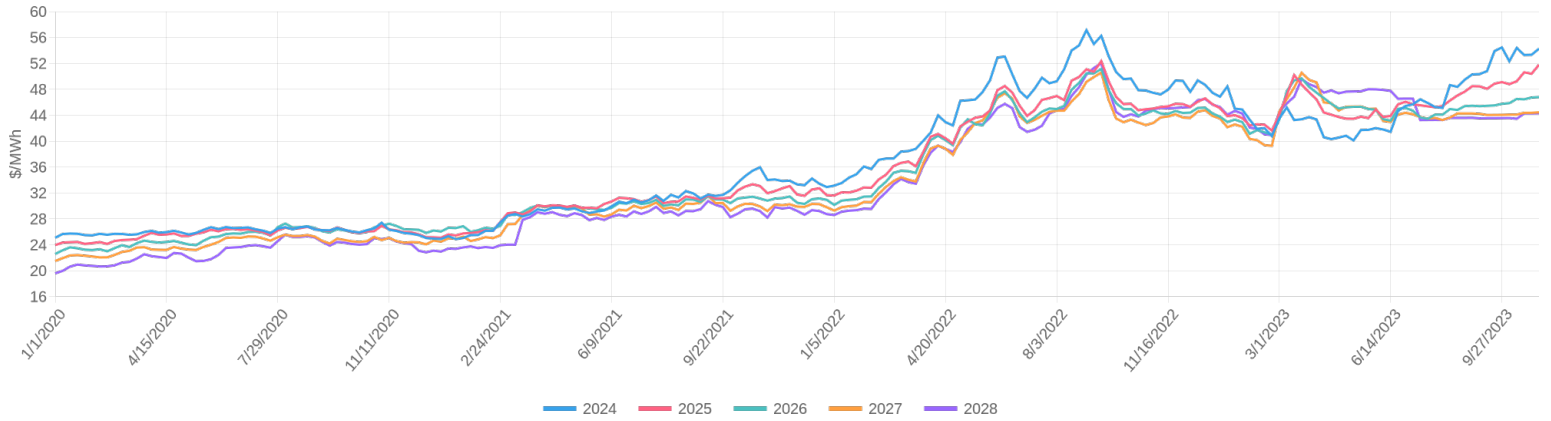


## Historical Pricing

Energy (RTC incl basis)



Start Mo	Term (months)	Price* (\$/MWh)	Daily Change	Weekly Change	Monthly Change
Jan 24	12 (Cal 2024)	\$54.55	(\$0.01)	(\$0.37)	\$1.37
Jan 25	12 (Cal 2025)	\$52.15	(\$0.08)	\$0.37	\$3.02
Jan 26	12 (Cal 2026)	\$47.24	(\$0.05)	\$0.45	\$0.70
Jan 27	12 (Cal 2027)	\$44.45	(\$0.01)	\$0.02	\$0.36
Jan 28	12 (Cal 2028)	\$44.67	\$0.00	\$0.39	\$1.38
Dec 23 (Prompt Mo)	12	\$54.45	(\$0.05)	\$0.17	\$1.57
	24	\$53.30	(\$0.06)	\$0.91	\$2.43
	36	\$51.41	(\$0.06)	\$0.79	\$2.15
	48	\$49.67	(\$0.05)	\$0.63	\$1.71
	60	\$48.64	(\$0.04)	\$0.58	\$1.58
	60 (Nov 28)**	\$48.64	(\$0.04)	\$0.34	\$1.74

(\* ) = Energy price based on RTC block      (\*\* ) = Sweet-Spot term (lowest price term > 12 mo); End-month shown

### 60 Forward Months

